

SMS SERVER

Installation Guide

Website: www.m-science.com

Telephone: 01202 241120

Email: enquiries@m-science.com

Table of Contents

SMS Server hardware requirements.....	3
SMS Server architecture	3
Before you start	4
Installation	5
SMS Server Configuration & Testing	7

SMS Server Installation Guide

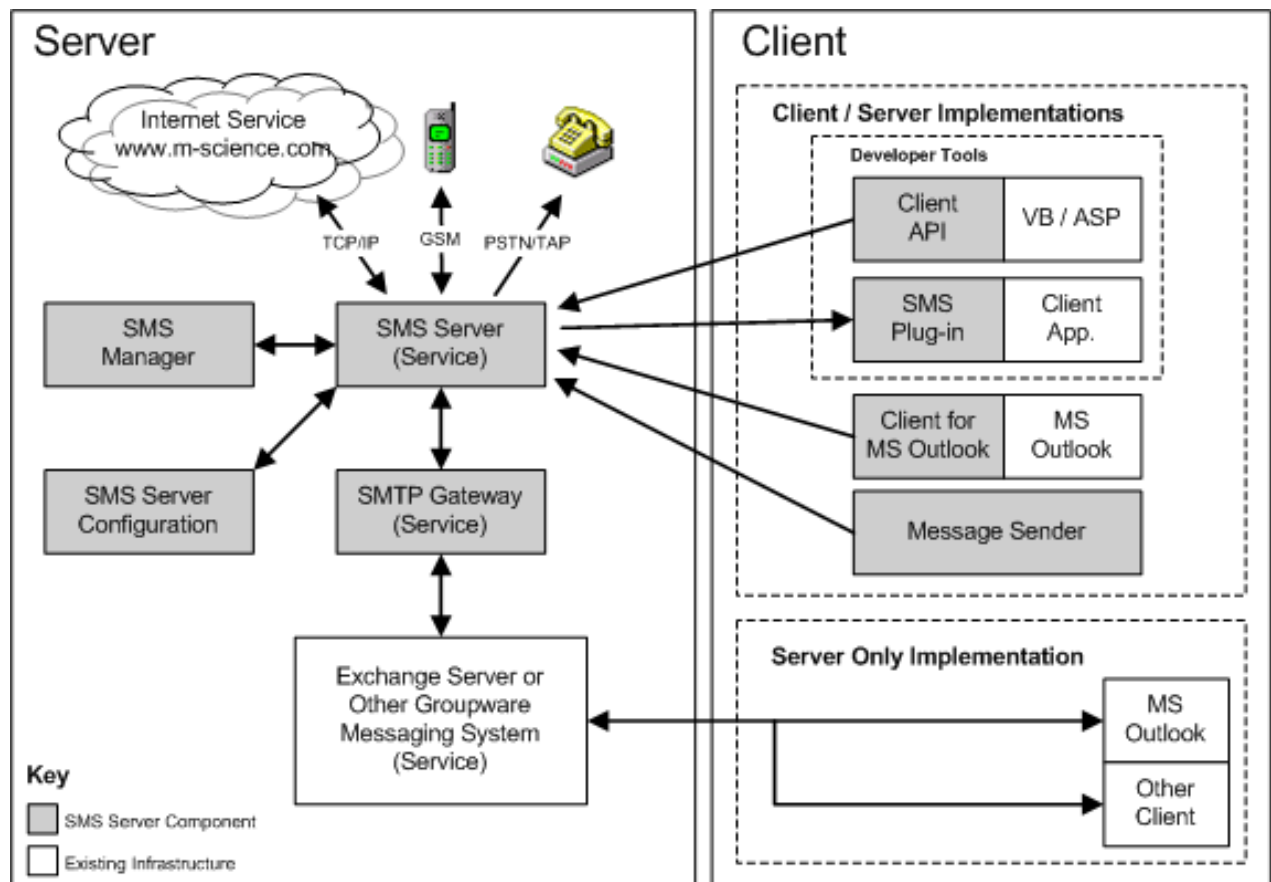
This guide has been created to enable you to successfully install M:Science SMS Server. On completion of the installation the SMS Server product will be usable within (but not limited to) the following environments:

- Groupware systems such as Microsoft Exchange
- Third party applications which use SMTP

SMS Server hardware requirements

- Any P4 Processor or above
- 512Mb RAM
- Hard Disk Drive space 1GB or above
- Display to operate in 800x600 or above
- Keyboard and Mouse
- Microsoft Windows

SMS Server architecture



Before you start

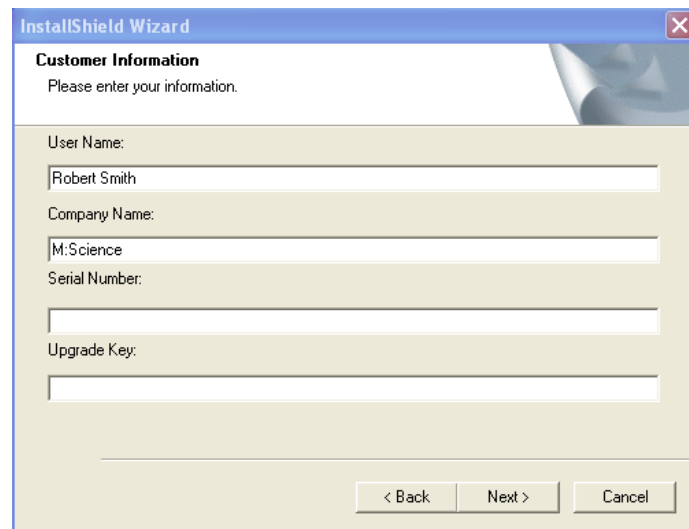
M:Science SMS Server requires the following logical steps be completed either before or during the installation:

1. Registering for a SMS Server account (this provides an account to which SMS Server will communicate with at M:Science), once created M:Science can credit pre-purchased messages. You may register here on our website: <http://www.m-science.com/products/sms-server.php>
2. Ensure fire wall ports **4100** and **4101** are not restricted between the proposed M:Science machine and the internet. These ports can be tested using the following telnet command: **telnet sms1.m-science.com 4100**
3. Check communication on port **25** both ways between the proposed M:Science machine, mail server, or any other third party application you wish to send SMS from.

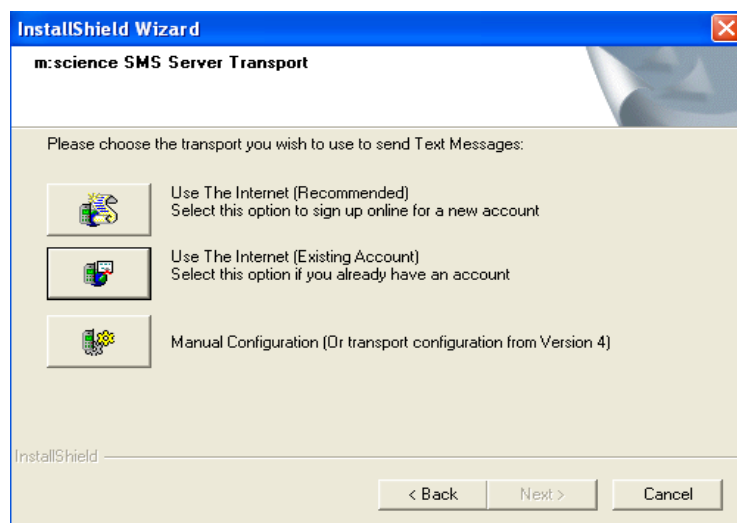
Installation

M:Science will have provided you with either an .exe file or an installation CD which can now be used to install the SMS Server product. For your reference the product is made up of client side and server side applications – SMS Manager, SMS Server Configuration and Send Message. We suggest you choose a full install.

1. Run the setup application and choose full install
2. Enter provided license keys once prompted

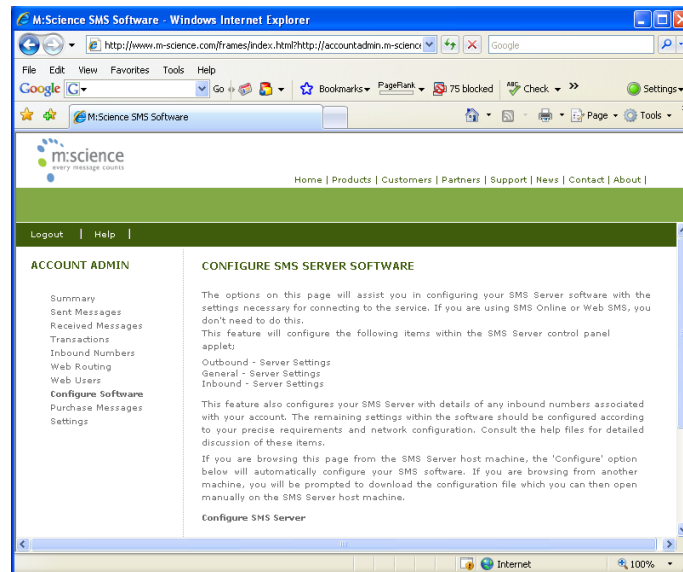


3. SMS Server transport setup - if you have already registered for a SMS Server account, as mentioned in the "Before you start" section, please choose "Use the Internet (Existing Account), otherwise select "Use the Internet (recommended)"



- Once complete, please log in to your SMS Server account by using the credentials emailed to you: <http://www.m-science.com/frames/index.html?http://accountadmin.m-science.com/MScienceWSALogin.aspx?ReturnUrl=MScienceWSAOverview.aspx>

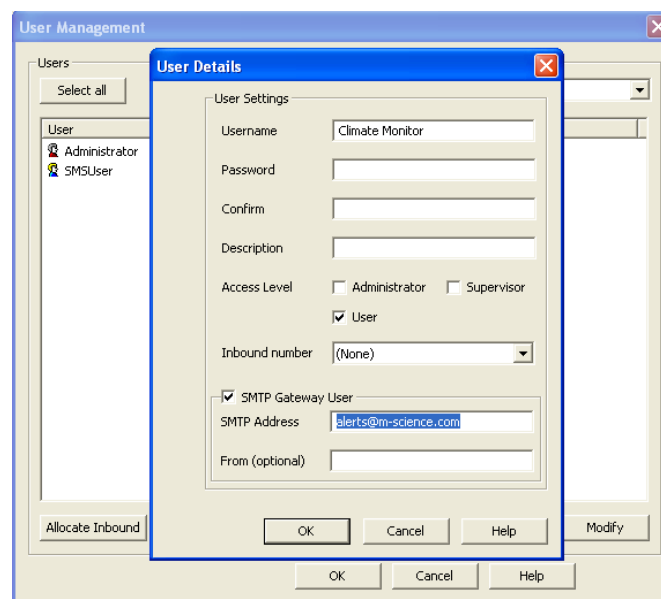
Once logged in you will need to click on the “Configure Software” option which will download an .OCX file to your desktop. Upon double clicking this file your transport settings including Username and Password will be configured within SMS Server.



SMS Server Configuration & Testing

At this stage SMS Server should be capable of sending text messages. In this section we will cover configurations of SMS Server using SMTP authentication and communication with third party applications such as a mail server. It is possible to call the SMS Server SMTP Gateway directly or for sending and receiving of messages from your mail client, using a virtual domain / connector on your mail server.

1. To check outbound capabilities, use the M:Science Send Message application to send a simple text message to your phone.
2. SMS Server supports two types of authentication (needed when receiving SMTP messages from your mail server / third party application) which are SMS and Windows AD. We advise using SMS authentication with a small amount of users - please note this is set as default.
3. Assuming your application is capable of sending SMTP messages to your mail server, and you require your application to send both SMS and Email then you will need to create a Virtual Domain / Connector on your mail server to handle the SMS traffic. If you require just SMS alerts to be sent then please re-configure your third party application with details of the SMS Server machine such as IP address.
4. We now need to create a user for within the SMS Manager application. This will identify either a virtual or physical email address that SMS Server looks up before sending out the messages. Simply enter a username and specify the user as a "SMTP Gateway User" and add the email address as shown below. Hit OK to save your new user.



5. SMS Sever has an inbuilt SMTP Gateway which, as default, is set to look out for messages addressed to [**mobilenumber@send.sms**](mailto:mobilenumber@send.sms)

Assuming we keep this the same you need to configure your mail client or third party application in the same format. For example: 07812345678@send.sms

Once a SMTP message is created and sent from (given email address) to 07812345678@send.sms SMS Server will pick up the senders email address and send a text message to 07812345678

6. Further support is available through the help files within the SMS Manager application. For help with creating a virtual domain we advise consulting Microsoft help and support, we have found this article particularly useful: <http://support.microsoft.com/kb/265293>